

GLENCOE TOWNSHIP

Each township has six files containing six sections in each, and one file containing all 36 sections.

Glencoe01to06.pdf
Glencoe07to12.pdf
Glencoe13to18.pdf
Glencoe19to24.pdf
Glencoe25to30.pdf
Glencoe31to36.pdf
GlencoeAll36.pdf

The points are listed starting with the point above the SE corner and continuing in a counter-clockwise rotation around the section. This normally begins with the East point, Northeast, then North, but may also include Witness Corners, and/or Meander Corners.

Definitions

Witness Corner: A witness corner “stands in” when the true corner cannot be monumented or occupied because of difficult terrain or obstruction of the corner sight. The witness corner must be on the section line and is usually 5 or 10 chains away from the true corner.

Meander Corner: The intersection of a township, range, or section line and the banks of a navigable stream or meandering body of water.

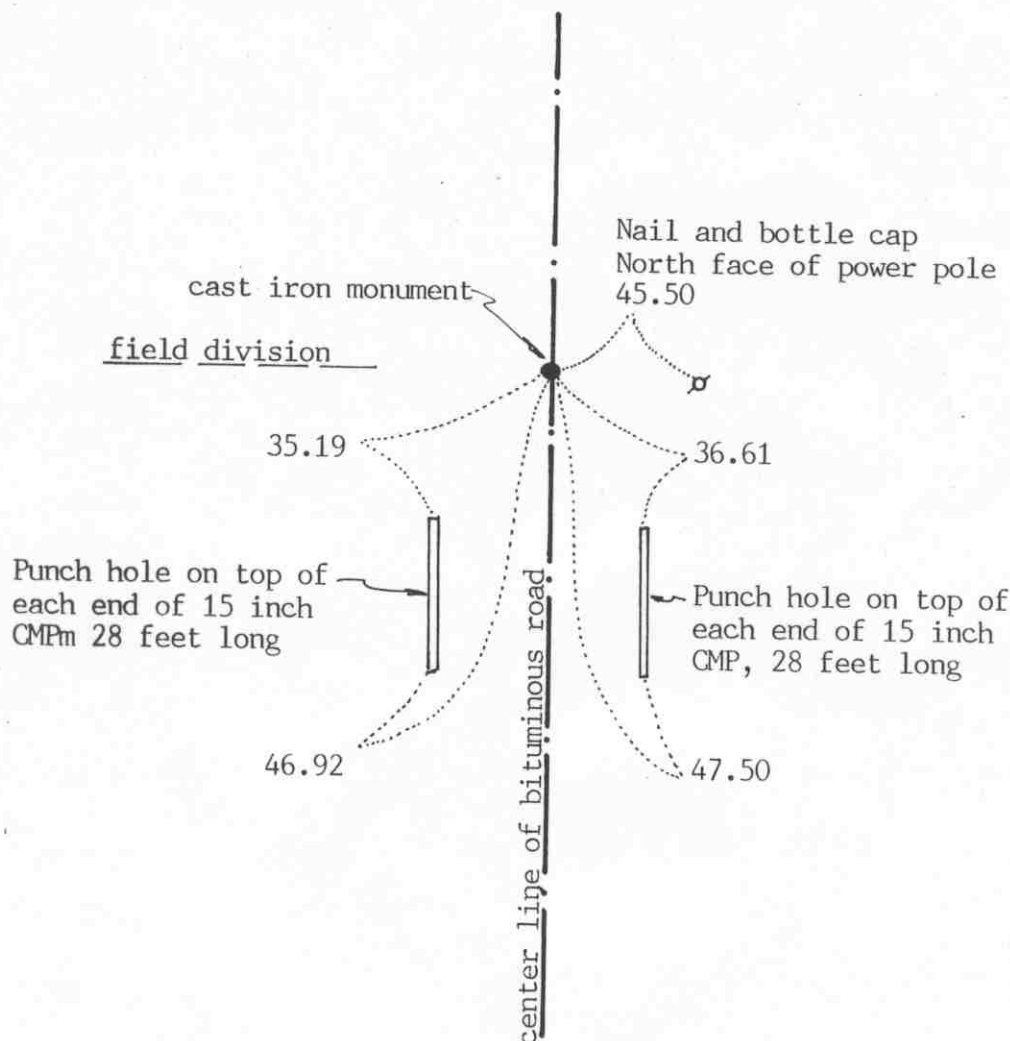
EAST QUARTER corner, Section 1, Township 115 North, Range 28 West

Certificate of Location of Government Corner

SKETCH OF REFERENCE TIES
(NO SCALE)



SECTION 1 T115 R28



SECTION 6 T115 R27

Statement of evidence relative to this corner location on sheet 2

I hereby certify that this document was prepared by me or under my direct supervision.

Willard Pellinen

Willard Pellinen
McLeod County Surveyor
License No. 9626

Date Sept. 2, 1991

OFFICE OF THE COUNTY RECORDER
MCLEOD COUNTY, MINNESOTA.

I hereby certify that this document was filed in this office at 1:30 o'clock P. M. on the 3rd day of Oct, 1991.

Carmen Ostlie, County Recorder

By _____, Deputy

Document No. 241301

EAST QUARTER corner, Section 1, Township 115 North, Range 28 West

Certificate of Location of Government Corner

1855. John Ryan of the General Land Office set a post and marked 2 oaks for bearing trees.

January 3, 1900. E. L. Higgins, county surveyor, found a stake and a bearing tree. He measured 2661 feet to the north east corner of Section 1.

1970. McCombs Knutson Associates (Dickman Knutson, county surveyor) found an iron pipe and replaced it with a McLeod County cast iron monument.

July 28, 1987. We found the monument in good condition 4 inches below the bituminous surface. All reference ties had been destroyed so we took new available ties.

June 2, 1990. We found the monument in good condition and checked the reference ties. This monument is 2661.05 feet south of the northeast corner of the section compared with 2661 by Higgins in 1900. It is 1.15 feet west of a straight line between the section corners.

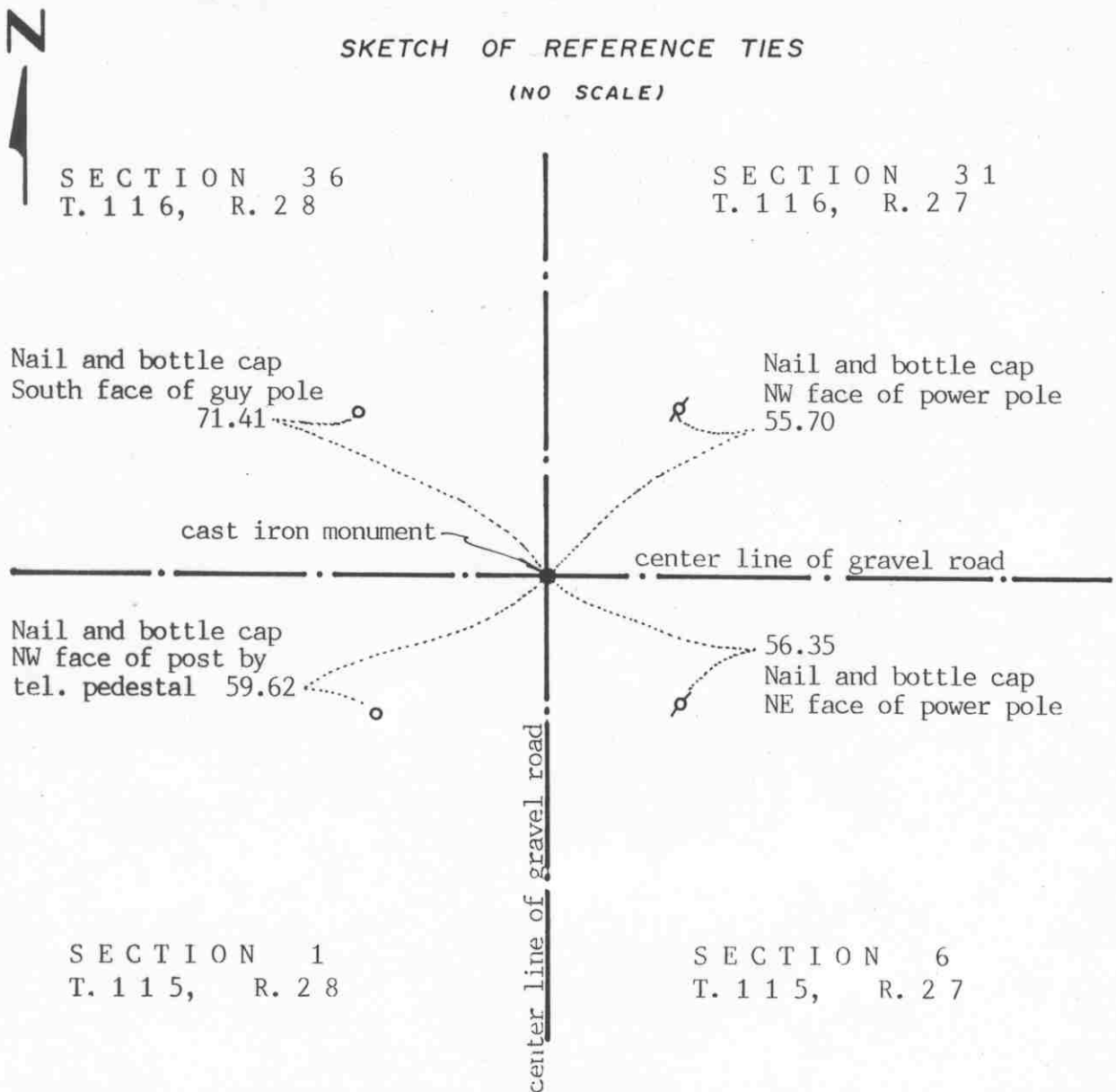
We accept the iron pipe found by Knutson as having perpetuated the correct location of the quarter corner. It fits occupation lines, the center of the road in line with a field division to the west. It is also very close to the 1900 distance from the northeast corner.

NORTHEAST corner, Section 1, Township 115 North, Range 28 West

Certificate of Location of Government Corner

SKETCH OF REFERENCE TIES

(NO SCALE)

Statement of evidence relative to this corner location on sheet 2

I hereby certify that this document
was prepared by me or under my
direct supervision.

Willard Pellinen

Willard Pellinen
McLeod County Surveyor
License No. 9626

Date Oct. 3, 1991

OFFICE OF THE COUNTY RECORDER
MCLEOD COUNTY, MINNESOTA.

I hereby certify that this document was filed in this
office at 1 o'clock P.M. on the 21st day
of Oct, 1991.

Carmen Hotliw, County Recorder

By _____, Deputy

Document No. 241584

NORTHEAST corner, Section 1, Township 115 North, Range 28 West

Certificate of Location of Government Corner

1855. John Ryan of the General Land Office set a post and marked 3 elms and an ironwood for bearing trees.

January, 1900. E.L.Higgins found an old stake 2 rods from a fence corner and put in a stone and a stake. He measured 2661 feet to the east quarter corner of Section 1.

December, 1968. McCombs Knutson Associates (Dickman Knutson, county surveyor) measured the east line of Section 1 and set a temporary corner at the center line intersection of the roads.

1969. Knutson dug for the corner but found nothing.

October 26, 1970. Knutson set a McLeod County cast iron monument at the center line intersection of the roads and took available reference ties.

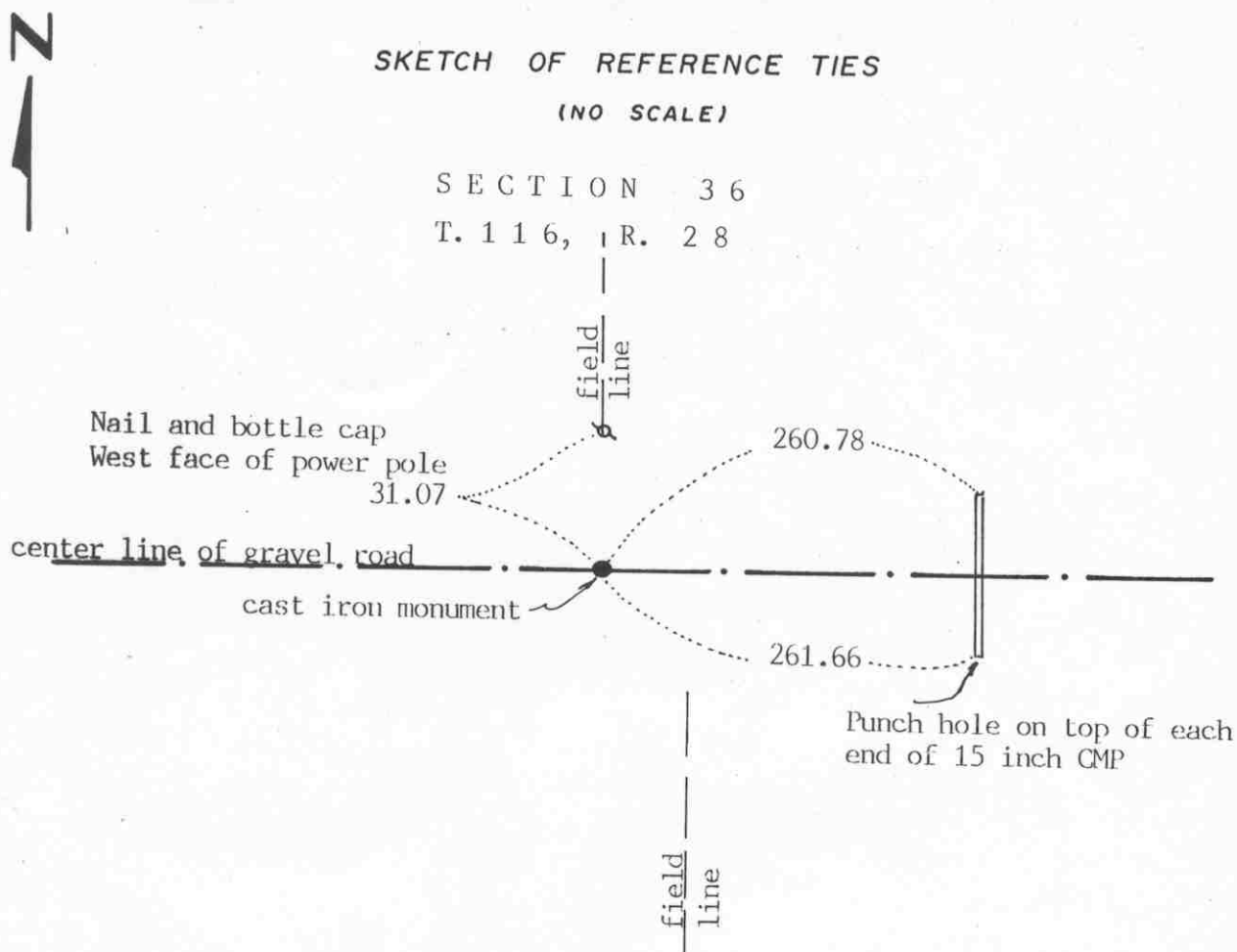
November, 1990. We found the monument in good condition and measured 2661.05 feet to the east quarter corner compared with 2661 feet by Higgins. We took new reference ties.

There being no evidence to the contrary, we accept the monument set by Knutson as marking the section corner. It is on old occupation lines, the center lines of the roads and the distance to the east quarter corner is the same as in 1900.

NORTH QUARTER corner, Section 1, Township 115 North, Range 28 West

Certificate of Location of Government Corner

SKETCH OF REFERENCE TIES
(NO SCALE)



SECTION 1
T. 115, R. 28

Statement of evidence relative to this corner location on sheet 2

I hereby certify that this document was prepared by me or under my direct supervision.

Willard Pellinen

Willard Pellinen
McLeod County Surveyor
License No. 9626

Date Sept. 30, 1991

OFFICE OF THE COUNTY RECORDER
MCLEOD COUNTY, MINNESOTA.

I hereby certify that this document was filed in this office at 1 o'clock P.M. on the 21st day of Oct, 1991.

Carmen O'Brien, County Recorder
By _____, Deputy

Document No. 241585

NORTH QUARTER corner, Section 1, Township 115 North, Range 28 West

Certificate of Location of Government Corner

1855. John Ryan originally set a post at this corner and marked 2 aspens for bearing trees.

September 1, 1969. McCombs Knutson Associates measured the north line of Section 1 and set a temporary quarter corner on the center line of the east-west road in line with a fence to the south. There was also a field line running north about $13\frac{1}{2}$ feet west of the temporary corner.

September 10, 1970. Knutson ran a line from the north quarter corner of Section 36 through a north-south fence near the center of Section 36. This line intersected the south line of Section 36 at the field line which was $13\frac{1}{2}$ feet west of the temporary corner.

Knutson dug for the corner, John Tupa from Hutchinson with a backhoe. They dug a long hole along the center line of the road between the fence line running south and the field line running north but found nothing.

October 27, 1970. Knutson set a McLeod County cast iron monument on the center line of the road half way between the section corners and took available reference ties.

June 21, 1990. We found the monument, top broken off, but the bottom of the monument in place and took new reference ties.

There being no evidence to the contrary, we accept the monument set by Knutson as marking the correct location of the quarter corner.

EAST QUARTER corner, Section 2, Township 115 North, Range 28 West

Certificate of Location of Government Corner

SKETCH OF REFERENCE TIES
(NO SCALE)

SECTION 2

SECTION 1

Chiseled mark on top of
each end of 12 inch
concrete culvert.
20 feet long

25.40

30.70

center line of gravel road

Nail and bottle cap
North face of power pole
27.36

field line

cast iron monument

84.62

Nail and bottle cap
East face of telephone pole

Statement of evidence relative to this corner location on sheet 2

I hereby certify that this document
was prepared by me or under my
direct supervision.

Willard Pellinen

Willard Pellinen
McLeod County Surveyor
License No. 9626

Date Sept. 30, 1991

OFFICE OF THE COUNTY RECORDER
MCLEOD COUNTY, MINNESOTA.

I hereby certify that this document was filed in this
office at 1 o'clock P.M. on the 21st day
of Oct, 1991.

Armen Botchie, County Recorder

By _____, Deputy

Document No. 241586

EAST QUARTER corner, Section 2, Township 115 North, Range 28 West

Certificate of Location of Government Corner

July, 1855. A.H.Runyon of the General Land Office set a post and marked 2 aspens for bearing trees.

April 12, 1971. McCombs Knutson Associates (Dickman Knutson, county surveyor) measured the east line of Section 2 and set a temporary east quarter corner on the center line of the north-south gravel road in line with field lines east and west.

March 11, 1971. Eldor Mathews, who owns the northwest quarter of Section 1, said the corner is in the center line of the road in line with the field line to the east.

May, 1971. Knutson excavated for the corner, John Tupa from Hutchinson with a backhoe. They dug a hole 8 feet by 10 feet by $3\frac{1}{2}$ feet deep and found an oval stone with a sharp point up and wood stake by the stone. Other corners in the area have also been similar stones.

November 2, 1971. Knutson set a McLeod County cast iron monument and took available reference ties.

June 21, 1990. We found the monument in good condition down 3 inches below the surface of the gravel road and took new reference ties.

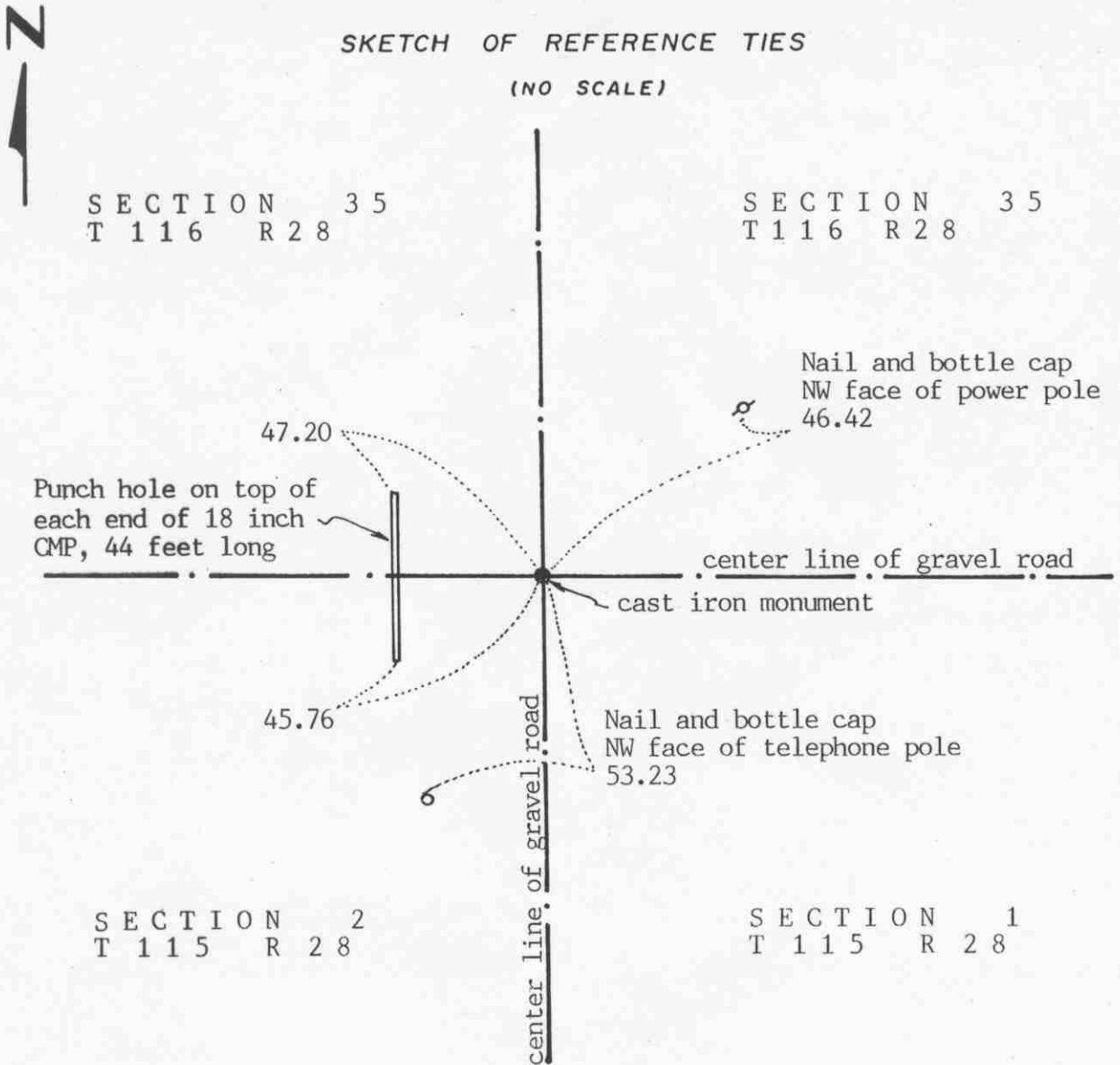
We accept the stone found by Knutson as having perpetuated the correct location of the quarter corner. This is within 0.01 foot of the government distance to the southeast corner, but is 90.16 feet south of a proration of the government distances between the section corners. It also is $22\frac{1}{2}$ feet east of a straight line between the section corners. The total distance between the southeast and northeast corners of the section is 184 feet longer than the government distance.

NORTHEAST corner, Section 2, Township 115 North, Range 28 West

Certificate of Location of Government Corner

SKETCH OF REFERENCE TIES

(NO SCALE)



Statement of evidence relative to this corner location on sheet 2

I hereby certify that this document was prepared by me or under my direct supervision.

Willard Pellinen

Willard Pellinen
McLeod County Surveyor
License No. 9626

Date Sept. 2, 1991

OFFICE OF THE COUNTY RECORDER
MCLEOD COUNTY, MINNESOTA.

I hereby certify that this document was filed in this office at 4:30 o'clock P.M. on the 3rd day of Oct, 1991.

Carmen Ostlie, County Recorder

By _____, Deputy

Document No. 241302

NORTHEAST corner, Section 2, Township 115 North, Range 28 West

Certificate of Location of Government Corner

1855. John Ryan of the General Land Office set a post and marked 3 aspens for bearing trees.

March 19, 1931. Field notes for Township Road survey show a 1 inch by 2 inch wood stake at the corner on the center line intersection of the roads.

1970. McCombs Knutson Associates (Dickman Knutson, county surveyor) dug for the corner and found a wood stake on the center line intersection of the roads. Willard Christensen, in the Southeast Quarter of Section 35, said the center line of the roads is the correct corner. Knutson set a McLeod County cast iron monument at the corner.

March 10, 1978. Knutson took new available ties to the corner.

February 11, 1987. All the old ties destroyed. We took new reference ties.

June 21, 1990. We found the monument in good condition and checked the reference ties.

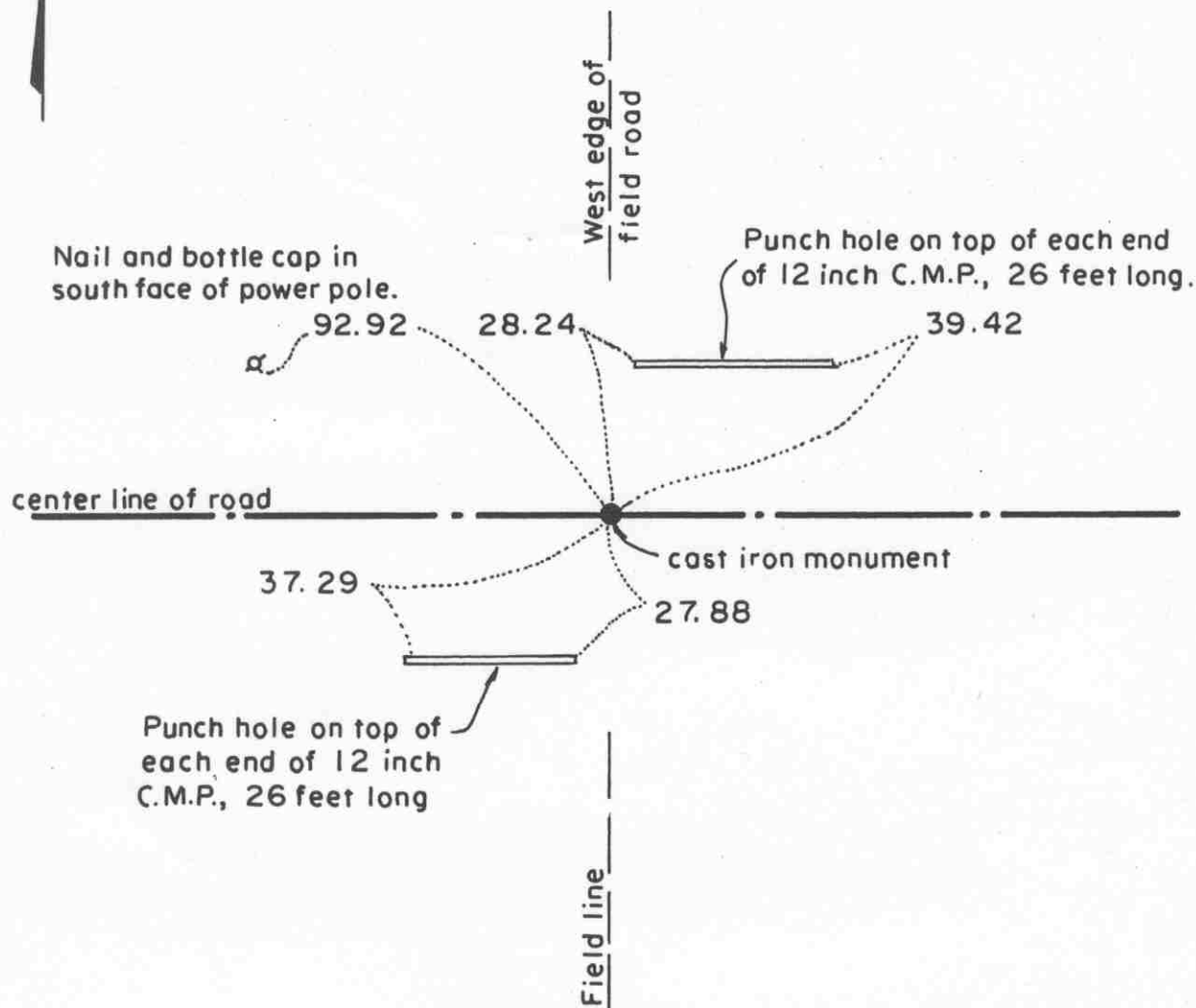
We accept the wood stake found by Knutson as having perpetuated the correct location of the section corner.

Certificate of Location of Government Corner

North Quarter corner, Section 2, Township 115 North, Range 28 West

SKETCH OF REFERENCE TIES (NO SCALE)

SECTION 35, T.116N., R.28W.



SECTION 2, T.115 N., R.28 W

Statement of evidence relative to this corner location on sheet 2

I hereby certify that this document was prepared by me or under my direct supervision.

Willard Pellinen

Willard Pellinen
McLeod County Surveyor
License No. 9626.

Date Feb. 3, 1995

OFFICE OF THE COUNTY RECORDER
MCLEOD COUNTY, MINNESOTA

I hereby certify that this document was filed in this office at 9 o'clock A. M. on the 6th day of February, 19 95.

Carmen Oetlie Mulder, County Recorder

By _____, Deputy.

Document No. 264001

Certificate of Location of Government Corner
North Quarter Corner, Section 2, Township 115 North, Range 28 West

1855. John Ryan of the General Land Office established this corner. He set a post and marked an 8 inch aspen and a 9 inch aspen for bearing trees.

September 11, 1969. Dickman Knutson, county surveyor, found a 1/2 inch diameter iron rod at the center line of the east-west road in line with a field line to the south and took available reference ties.

1970. Knutson replaced the iron rod with a McLeod County cast iron monument.

February 11, 1987. We found the monument down 6 inches below the surface of the road and took new ties.

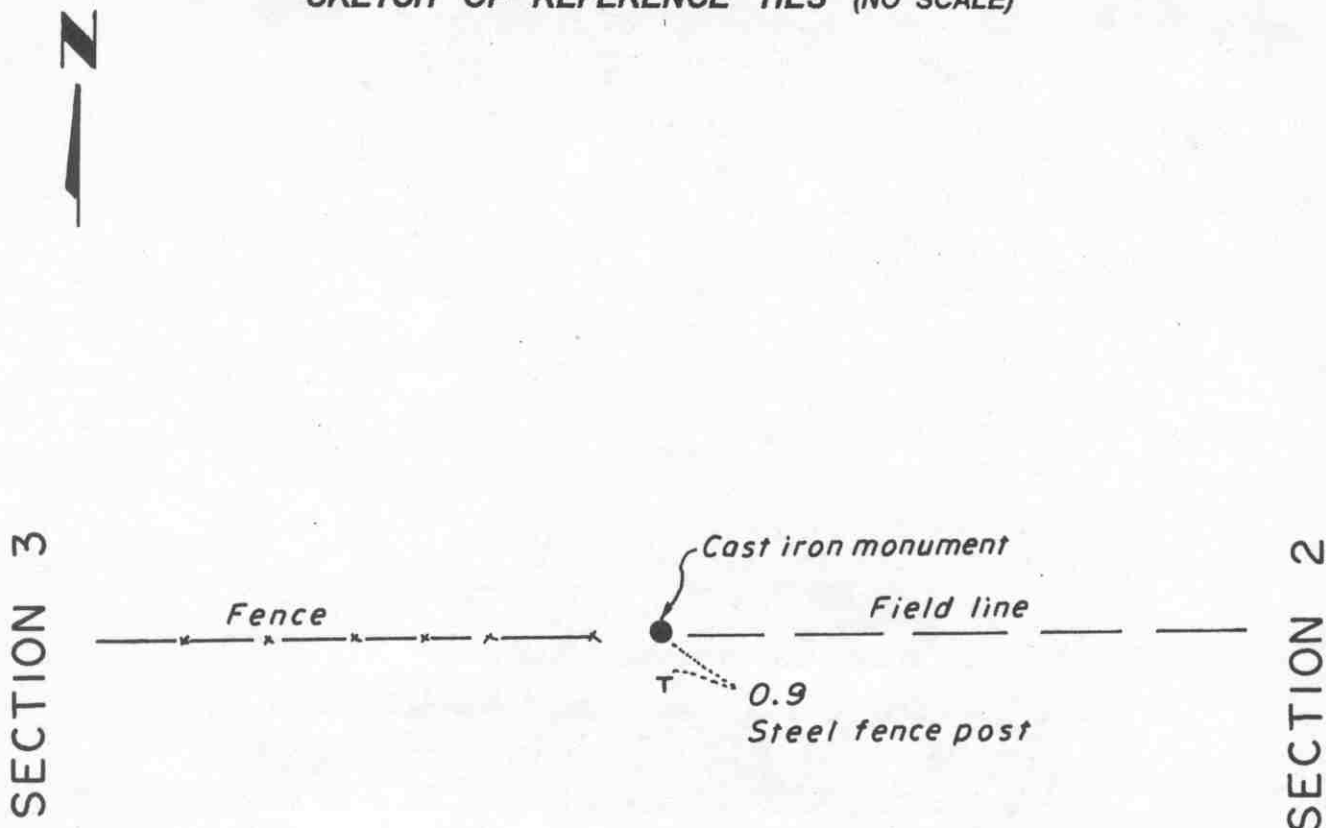
January 13, 1995. We checked the reference ties to the monument.

The monument set by Knutson is accepted as marking the location of the government corner. It fits long standing occupation lines and it perpetuates the location of an older monument.

Certificate of Location of Government Corner

East Quarter corner, Section 3, Township 115 North, Range 28 West

SKETCH OF REFERENCE TIES (NO SCALE)



Statement of evidence relative to this corner location on sheet 2

I hereby certify that this document was prepared by me or under my direct supervision.

Willard Pellinen

Willard Pellinen
McLeod County Surveyor
License No. 9626.

Date April 20, 1995

OFFICE OF THE COUNTY RECORDER
MCLEOD COUNTY, MINNESOTA

I hereby certify that this document was filed in this office at 9 o'clock A. M. on the 24th day of Apr 19 95.

Carmen Dotlie Mulder, County Recorder

By _____, Deputy.

Document No. 265311

Certificate of Location of Government Corner
East Quarter Corner, Section 3, Township 115 North, Range 28 West

July, 1855. A. H. Runyon of the General Land Office established this corner. He set a post, drove a charred stake, raised mound with trench and planted apple seeds at the southeast corner of the mound.

December, 1972. Dickman Knutson, county surveyor, set an iron pipe along an east-west fence on a straight line between the section corners. No occupation line running in a north-south direction.

June 25, 1974. Knutson replaced the iron pipe with a McLeod County cast iron monument and took reference ties.

February 1, 1995. We found the monument in good condition and checked the reference ties.

Certificate of Location of Government Corner

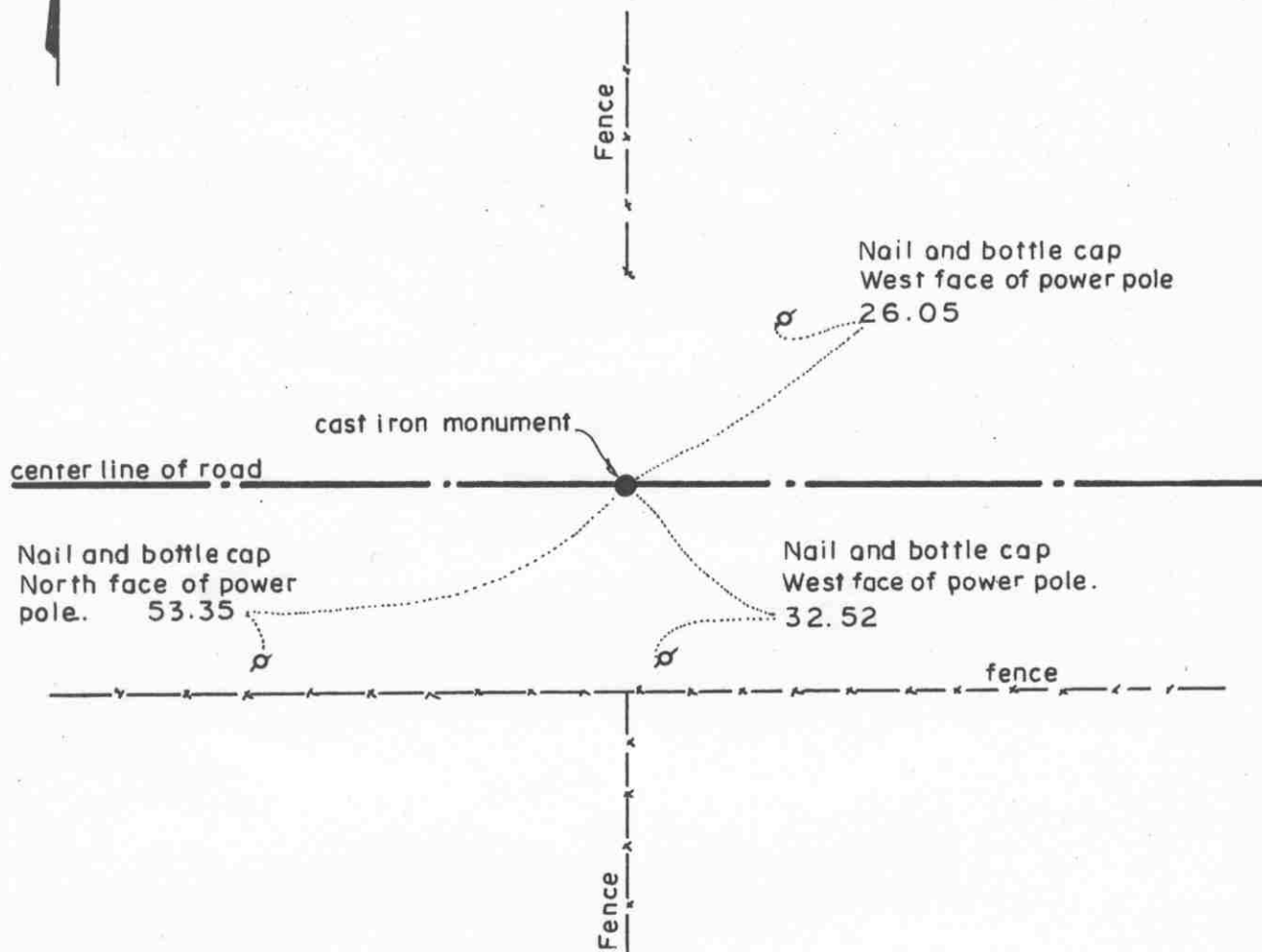
Northeast corner, Section 3, Township 115 North, Range 28 West

SKETCH OF REFERENCE TIES (NO SCALE)

T. 116 N., R. 28

SECTION 34

SECTION 35



Statement of evidence relative to this corner location on sheet 2

I hereby certify that this document
was prepared by me or under my
direct supervision.

Willard Pellinen

Willard Pellinen
McLeod County Surveyor
License No. 9626.

Date Feb. 3, 1995

OFFICE OF THE COUNTY RECORDER
MCLEOD COUNTY, MINNESOTA

I hereby certify that this document was filed in this office at 9
o'clock A. M. on the 6th day of February,
19 95.

Carmen O'Brien Mulder County Recorder

By _____, Deputy.

Document No. 264002

Certificate of Location of Government Corner
Northeast Corner, Section 3, Township 115 North, Range 28 West

1855. John Ryan of the General Land Office established this corner. He set a post, deposited charcoal, dug pits and trench, built mound and planted osage orange seeds at the corners of the mound.

1969. Dickman Knutson, county surveyor, dug for the corner. He found a stone in the center line of the east-west road in line with a fence to the north and a fence to the south. Adjoining land owners have accepted this location as being the section corner. Knutson set a McLeod County cast iron monument.

Janury 13, 1995. We checked the reference ties to the monument.

The monument set by Knutson is accepted as marking the location of the government corner. It fits long standing occupation lines and it perpetuates the location of an older monument.

NORTH QUARTER corner, Section 3, Township 115 North, Range 28 West

Certificate of Location of Government Corner



SKETCH OF REFERENCE TIES

(NO SCALE)

SECTION 34, T 116, R 28

Nail and bottle cap
East face of guy pole
24.91

center line of gravel road

cast iron monument

32.36
Nail and bottle cap
East face of power pole

351.51
Nail and bottle cap
North face of power pole

power lines

SECTION 3, T. 115, R. 28

Statement of evidence relative to this corner location on sheet 2

I hereby certify that this document
was prepared by me or under my
direct supervision.

Willard Pellinen

Willard Pellinen
McLeod County Surveyor
License No. 9626

Date 3/31/90

OFFICE OF THE COUNTY RECORDER
MCLEOD COUNTY, MINNESOTA.

I hereby certify that this document was filed in this
office at 4 o'clock P.M. on the 4th day
of April, 1990.

Carmen Potlie, County Recorder

By _____, Deputy

Document No. 232657

NORTH QUARTER corner, Section 3, Township 115 North, Range 28 West

Certificate of Location of Government Corner

This corner was originally established by the General Land Office in 1855. John Ryan set a post and had a reference tie to 1 bearing tree.

January 11, 1969. McCombs Knutson Associates, Dickman Knutson, county surveyor, set a temporary corner on the center line of the road in line with a power line to the south.

February, 1970. Henry Zajacek, 70+ years old, in the Southwest Quarter of Section 34 for 66 years and Ernest Alsleben, in the Northeast Quarter of Section 3 both say the center line of the road and power line to the south are on the section and quarter line.

May, 1970. Knutson dug for the corner and found a stone with an iron pin below it. They set a McLeod County cast iron monument and took reference ties.

March 15, 1989. We found the cast iron monument down 4 inches below the road surface but no reference ties remaining. We took available ties.

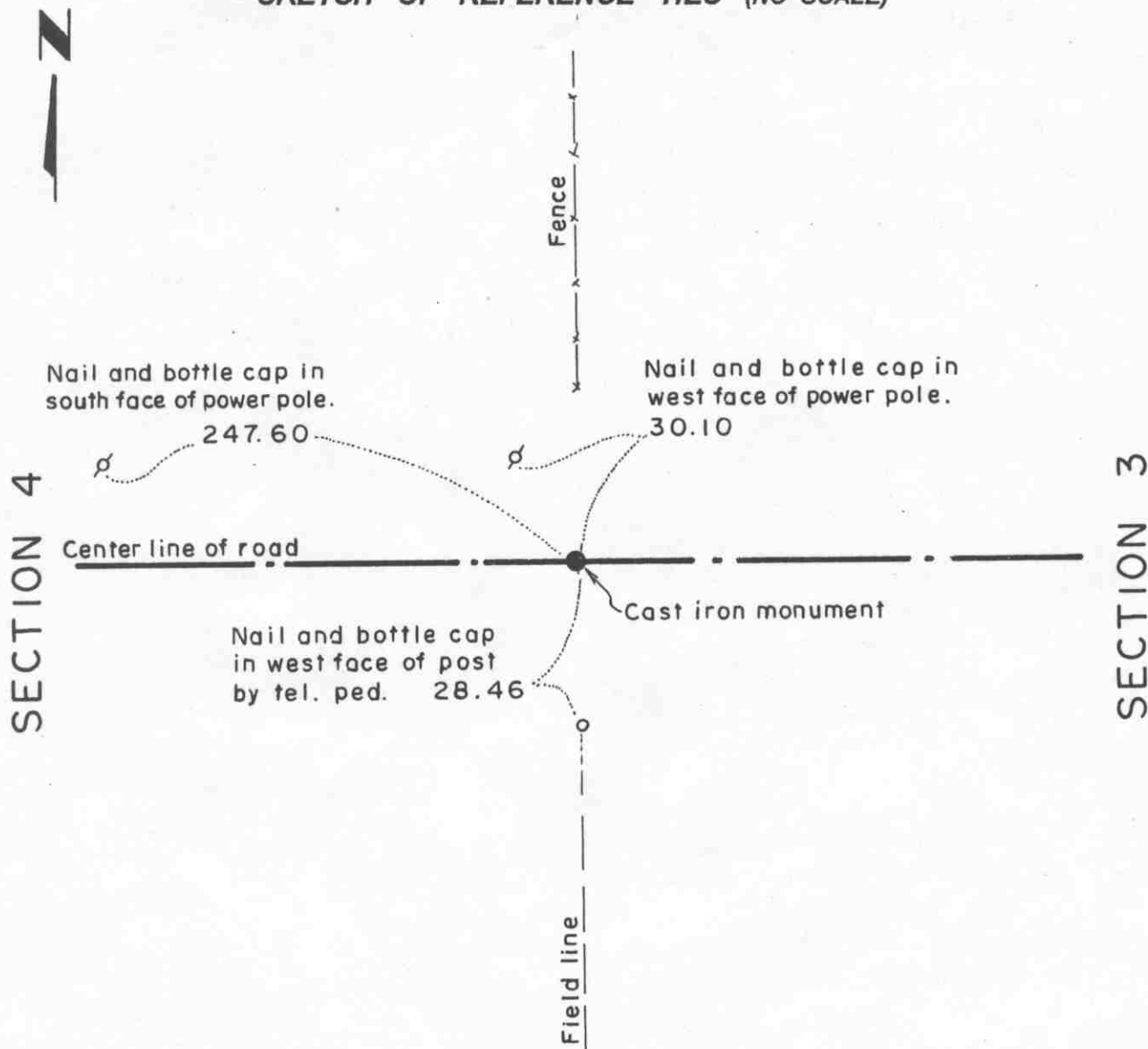
This monument is within 0.4 foot of being half way between the section corners and about 13 feet south of a straight line between the section corners.

The cast iron monument is accepted as the correct corner location because it perpetuates the position of the older monument which we feel has perpetuated the location of the true corner.

Certificate of Location of Government Corner

East Quarter corner, Section 4, Township 115 North, Range 28 West

SKETCH OF REFERENCE TIES (NO SCALE)



Statement of evidence relative to this corner location on sheet 2

I hereby certify that this document was prepared by me or under my direct supervision.

Willard Pellinen

Willard Pellinen
McLeod County Surveyor
License No. 9626.

Date Feb. 5, 1995.

OFFICE OF THE COUNTY RECORDER MCLEOD COUNTY, MINNESOTA

I hereby certify that this document was filed in this office at 9 o'clock A. M. on the 6th day of February, 19 95.

Carmen Ostlie Mulder County Recorder

By _____, Deputy.

Document No. 264003

Certificate of Location of Government Corner

East Quarter Corner, Section 4, Township 115 North, Range 28 West

July, 1855. A. H. Runyon of the General Land Office established this corner. He set a post and marked a 10 inch aspen and a 7 inch aspen for bearing trees.

1972. Adjoining land owners agree the center line of the east-west road is the quarter line and fences running north and south are along the section line.

October 27, 1972. Dickman Knutson, county surveyor, found a rotted wood stake in the center line of the road in line with the fences north and south and set a McLeod County cast iron monument. He took available reference ties.

January, 1995. The monument set by Knutson is accepted as marking the location of the government corner. It fits long standing occupation lines (the road and the fences) and it perpetuates the location of an older monument (the wood stake).

January 25, 1995. We found the monment in good condition down 4 inches below the surface of the gravel road and took new reference ties.

NORTHEAST corner, Section 4, Township 115 North, Range 28 West

Certificate of Location of Government Corner



SKETCH OF REFERENCE TIES
(NO SCALE)

TOWNSHIP 116, RANGE 28

SECTION 33

SECTION 34

Nail and bottle cap
North face of post
by telephone pedestal

156.01

$\frac{1}{2}$ inch diam. iron pipe
in shoulder of road
27.70

cast iron monument

center line of gravel road

Nail and bottle cap
West face of 6 inch tree
36.70

27.30
 $\frac{1}{2}$ inch diam. iron pipe
in shoulder of road



SECTION 4

SECTION 3

TOWNSHIP 115, RANGE 28

Statement of evidence relative to this corner location on sheet 2

I hereby certify that this document
was prepared by me or under my
direct supervision.

Willard Pellinen

Willard Pellinen
McLeod County Surveyor
License No. 9626

Date 3/31/90

OFFICE OF THE COUNTY RECORDER
MCLEOD COUNTY, MINNESOTA.

I hereby certify that this document was filed in this
office at 4 o'clock P.M. on the 4th day
of April, 1990.

Armen Ostlie, County Recorder

By _____, Deputy

Document No. 232656

NORTHEAST corner, Section 4, Township 115 North, Range 28 West

Certificate of Location of Government Corner

This corner was originally established by John Ryan of the General Land Office in 1855. He set a post and had reference ties to 3 bearing trees.

April 9, 1929. E.L. Higgins measured 2636.5 feet between this corner and the north quarter corner of Section 4.

September 11, 1969. McCombs Knutson Associates, Dickman Knutson, county surveyor, set a temporary corner on the center line of the gravel road in line with a fence to the south.

May, 1970. Knutson dug for the corner and found a stone set on end down 3 feet below the road surface. They set a McLeod County cast iron monument and took reference ties.

January 16, 1986. We found the cast iron monument in good condition. Reference ties destroyed so we retied the corner.

December 1987. We measured the north line of Section 4 and had a distance of 2636.86 feet to the north quarter corner compared with 2636.5 by Higgins in 1929.

March 15, 1989. We found the monument in good condition and the reference ties good.

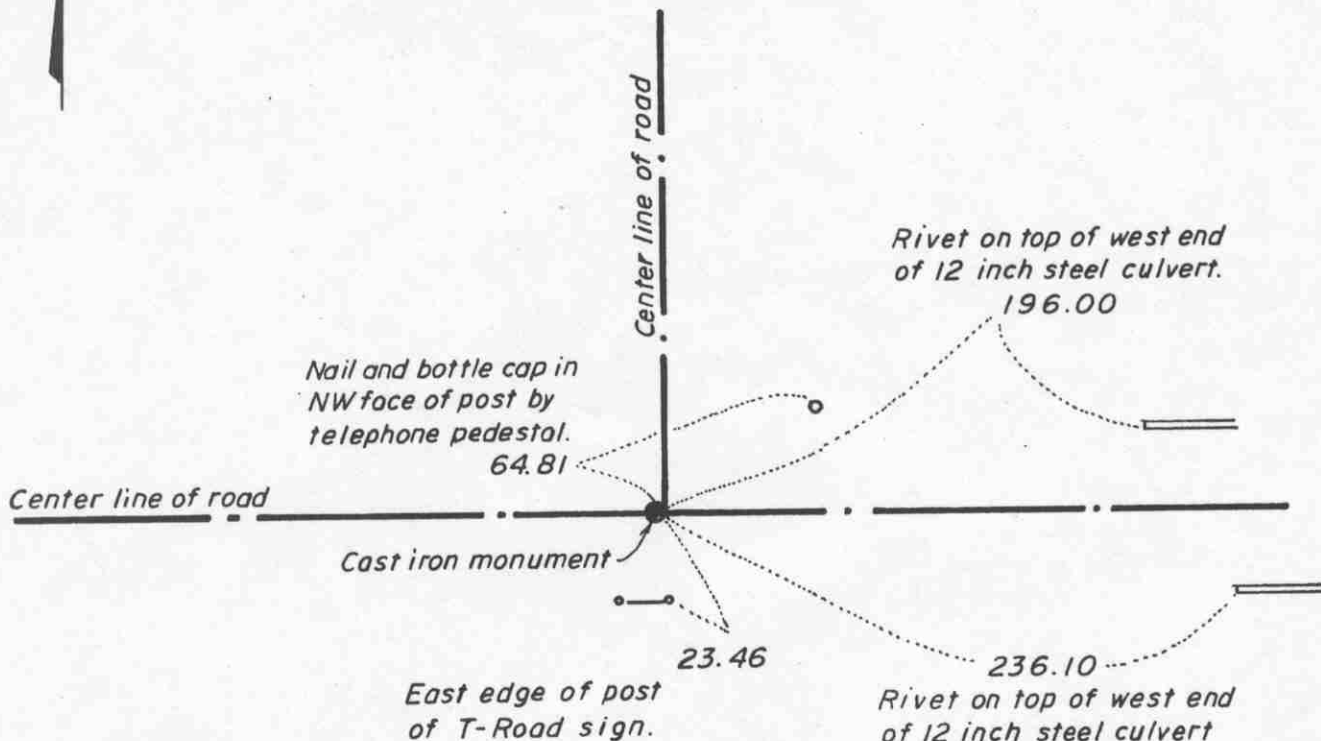
We accept the cast iron monument as the correct location of the section corner because it perpetuates the position of an older monument (stone), fits the occupation lines and agrees with the 1929 distance to the north quarter corner.

Certificate of Location of Government Corner

North Quarter corner, Section 4, Township 115 North, Range 28 West

SKETCH OF REFERENCE TIES (NO SCALE)

SECTION 33, T.116, R.28



SECTION 4, T.115, R.28

Statement of evidence relative to this corner location on sheet 2

I hereby certify that this document was prepared by me or under my direct supervision.

Willard Pellinen
Willard Pellinen
McLeod County Surveyor
License No. 9626.

Date April 20, 1995

OFFICE OF THE COUNTY RECORDER
MCLEOD COUNTY, MINNESOTA

I hereby certify that this document was filed in this office at 9 o'clock A M. on the 24th day of Apr 19 95.

Armen Potlie Mulder, County Recorder

By _____, Deputy.

Document No. 265312

Certificate of Location of Government Corner
North Quarter Corner, Section 4, Township 115 North, Range 28 West

1855. John Ryan of the General Land Office established this corner. He set a post and marked a 15 inch linden and a 13 inch linden for bearing trees.

1969. Adjoining land owners have accepted the center line intersection of the roads as being the quarter corner. Dickman Knutson, county surveyor, excavated for the corner at the center line intersection but found no evidence of the government corner.

October 27, 1970. Knutson set a McLeod County cast iron monument at the intersection of the center lines. This is very near to a point half way between the section corners, and within a half foot of 1929 survey distances to the section corners. Knutson took available reference ties.

February 1, 1995. We found the monument in good condition down 8 inches below the surface of the gravel road and took new available ties.

EAST QUARTER corner, Section 5, Township 115 North, Range 28 West

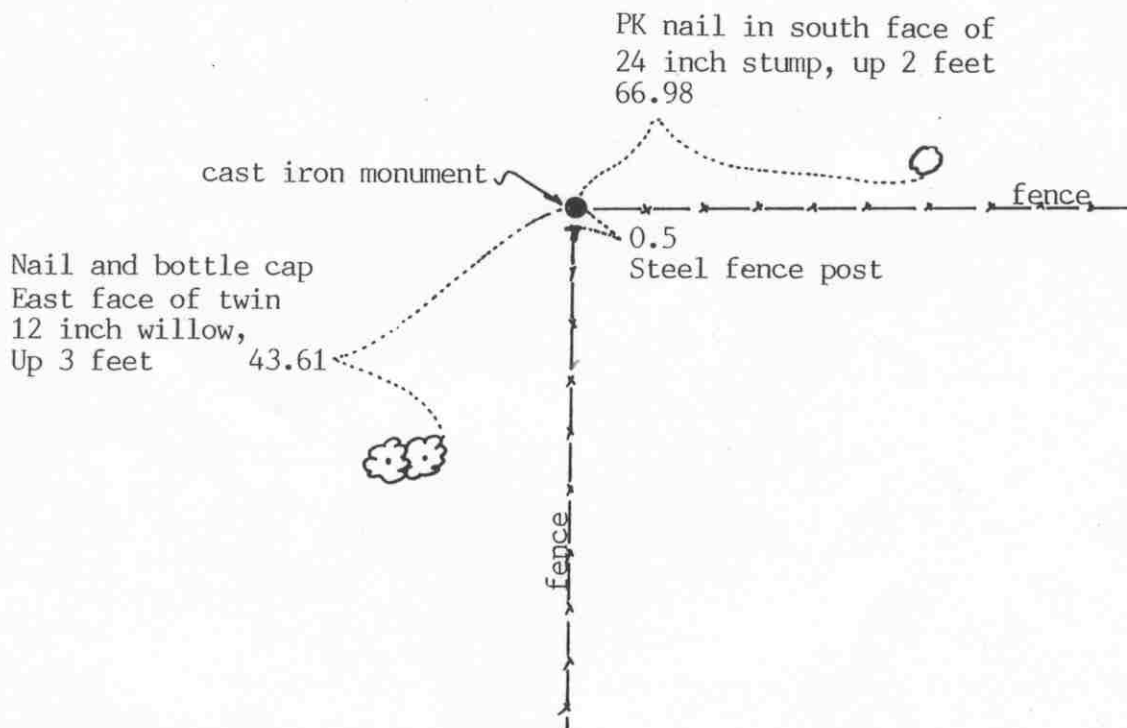
Certificate of Location of Government Corner

SKETCH OF REFERENCE TIES (NO SCALE)



SECTION 5

SECTION 4



Statement of evidence relative to this corner location on sheet 2

I hereby certify that this document was prepared by me or under my direct supervision.

Willard Pellinen

Willard Pellinen
McLeod County Surveyor
License No. 9626

Date Nov. 14, 1992

OFFICE OF THE COUNTY RECORDER
MCLEOD COUNTY, MINNESOTA.

I hereby certify that this document was filed in this office at 9 o'clock A.M. on the 20th day of November, 19 92.

Carmen Stiller Mulder, County Recorder

By _____, Deputy

Document No. 248982

EAST QUARTER corner, Section 5, Township 115 North, Range 28 West

Certificate of Location of Government Corner

July, 1855. This corner was originally established by the General Land Office. A.H.Runyon set a post on the south edge of a swamp and marked a 6 inch and a 24 inch oak for bearing trees.

February 28, 1973. Mr Frank Picha, 86 years old, and had owned the Northwest Quarter of Section 4 until about 20 years ago, said the farm was surveyed many years ago. He couldn't remember when, but it was before 1931 when Higgins set the corner about 25 feet farther north. Mr Picha said the fence was put in the correct place when it was surveyed. He said the fence intersection, fences south and east, is the quarter corner. The east-west fence runs along the east-west quarter line of Section 5. Mr. Ralph Picha, present owner agrees with Mr. Frank Picha.

October 19, 1973. McCombs Knutson Associates (Dickman Knutson, county surveyor) set a McLeod County cast iron monument at the fence intersection and took available ties.

November 12, 1992. We found no ties remaining. We found the monument in good condition 6 inches below the surface of the ground and took new reference ties.

The monument set by Knutson is accepted as the correct location of the quarter corner. It fits the long standing occupation lines, the fences south and east.

NORTHEAST corner, Section 5, Township 115 North, Range 28 West

Certificate of Location of Government Corner

SKETCH OF REFERENCE TIES
(NO SCALE)

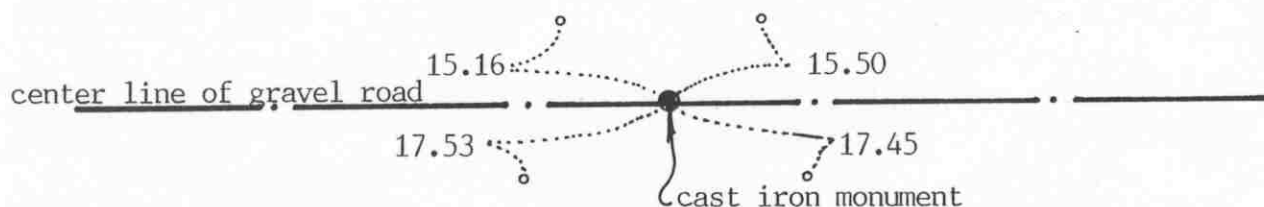
SECTION 32

T. 116

SECTION 33

R. 28

Ties are to $\frac{1}{2}$ inch iron pipes in shldr of road



2636.86 feet to N $\frac{1}{4}$ corner of Section 4
2607.50 feet to E $\frac{1}{4}$ corner of Section 32

SECTION 5

T. 115

R. 28

SECTION 4

Statement of evidence relative to this corner location on sheet 2

I hereby certify that this document was prepared by me or under my direct supervision.

Willard Pellinen

Willard Pellinen
McLeod County Surveyor
License No. 9626

Date November 14, 1992

OFFICE OF THE COUNTY RECORDER
MCLEOD COUNTY, MINNESOTA.

I hereby certify that this document was filed in this office at 9 o'clock A. M. on the 20th day of November, 19 92.

Barbara K. M. Maddy County Recorder

By _____, Deputy

Document No. 248981

NORTHEAST corner, Section 5, Township 115 North, Range 28 West

Certificate of Location of Government Corner

1855. This corner was originally established by John Ryan of the General Land Office. He set a post and marked a 15 inch and a 13 inch linden for bearing trees.

February 28, 1931. E. L. Higgins, county surveyor, found a stone and a wood post at the corner.

August 1969. McCombs Knutson Associates (Dickman Knutson, county surveyor) found the stone and wood stake and took available ties.

October 28, 1970. Knutson set a McLeod County cast iron monument at the corner.

November 12, 1992. All the reference ties were destroyed so we took new ties. We found the monument in good condition down 6 inches below the road surface.

The monument set by Knutson is accepted as the location of the government corner. It fits occupation line (the center line of the east-west road) and it perpetuates the location of an older monument, the found stone.

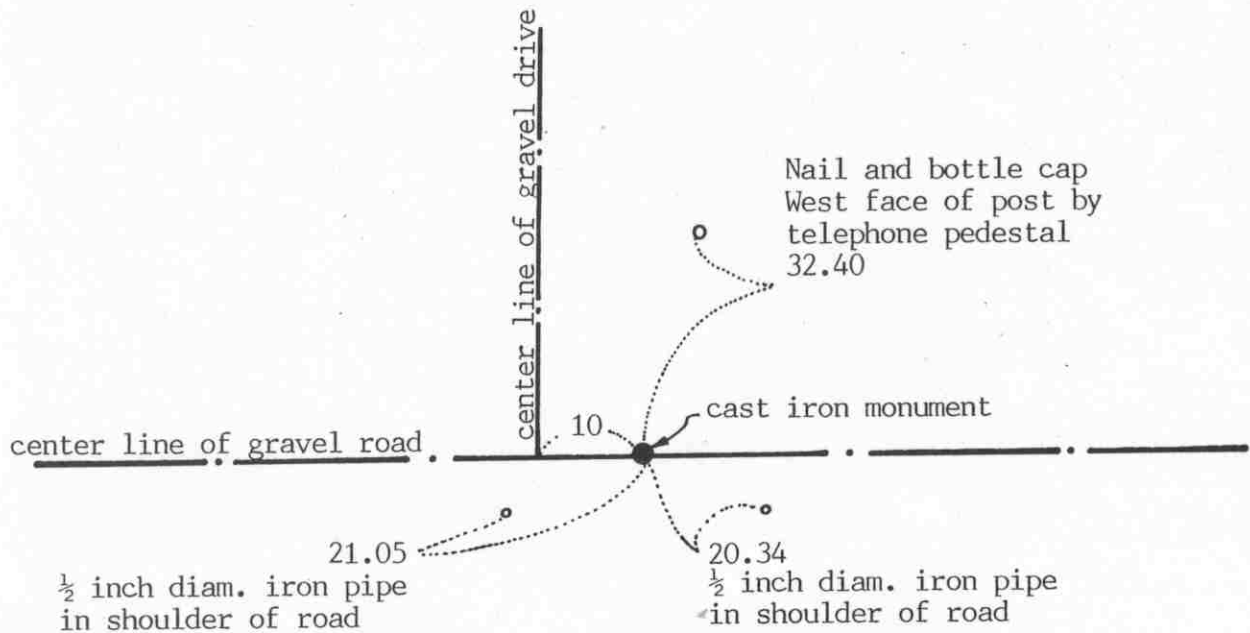
NORTH QUARTER corner, Section 5, Township 115 North, Range 28 West

Certificate of Location of Government Corner

SKETCH OF REFERENCE TIES

(NO SCALE)

SECTION 32, T.116, R. 28



SECTION 5, T.115, R. 28

Statement of evidence relative to this corner location on sheet 2

I hereby certify that this document was prepared by me or under my direct supervision.

Willard Pellinen

Willard Pellinen
McLeod County Surveyor
License No. 9626

Date Nov. 14, 1992

OFFICE OF THE COUNTY RECORDER MCLEOD COUNTY, MINNESOTA.

I hereby certify that this document was filed in this office at 9 o'clock A.M. on the 20th day of November, 1992.

Carmen K. Mulder, County Recorder

By _____, Deputy

Document No. 248983

NORTH QUARTER corner, Section 5, Township 115 North, Range 28 West*Certificate of Location of Government Corner*

1855. John Ryan of the General Land Office originally established this corner. He set a post and marked a 10 inch and a 12 inch oak for bearing trees.

1970. McCombs Knutson Associates (Dickman Knutson, county surveyor) dug for the corner. They dug a hole 10 feet by 5 feet by 4 feet deep but found no evidence of the government corner. Knutson set a McLeod County cast iron monument on a proration of 1939 survey distances to the northeast and northwest corners of Section 5.

October 28, 1970. Knutson set cast iron monument.

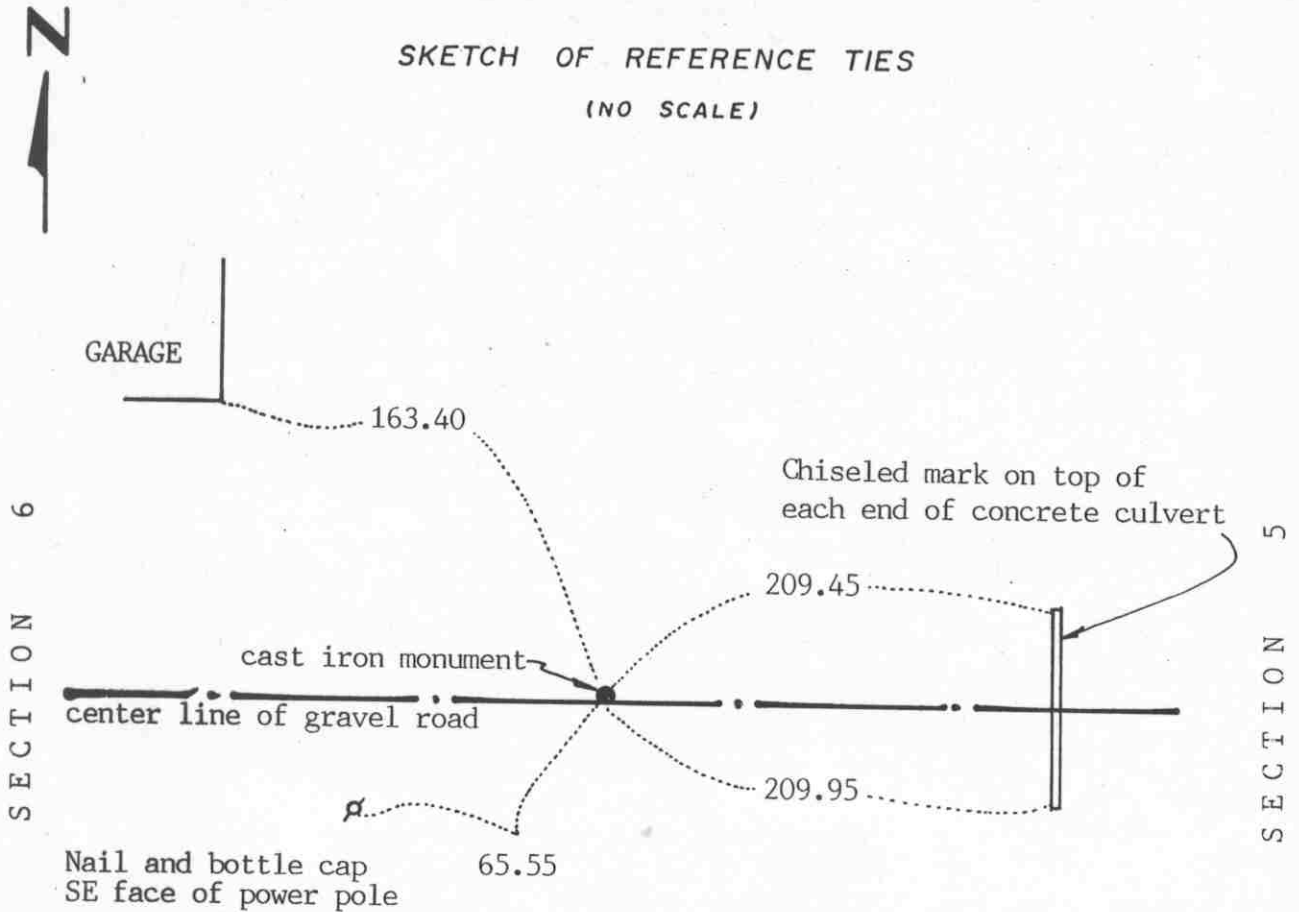
November 12, 1992. We found no ties remaining. We found the monument in good condition down 8 inches below the surface and took new reference ties.

The monument set by Knutson is accepted as marking the quarter corner. We feel the location had been perpetuated by the 1939 survey distances.

EAST QUARTER corner, Section 6, Township 115 North, Range 28 West

Certificate of Location of Government Corner

SKETCH OF REFERENCE TIES
(NO SCALE)



Statement of evidence relative to this corner location on sheet 2

I hereby certify that this document was prepared by me or under my direct supervision.

Willard Pellinen

Willard Pellinen
McLeod County Surveyor
License No. 9626

Date February 20, 1992

OFFICE OF THE COUNTY RECORDER
MCLEOD COUNTY, MINNESOTA.

I hereby certify that this document was filed in this office at 9 o'clock A.M. on the 6th day of May, 1992.

Armen Botchie, County Recorder

By _____, Deputy

Document No. 245074

EAST QUARTER corner, Section 6, Township 115 North, Range 28 West***Certificate of Location of Government Corner***

July 1855. The original Public Land Survey was run by A. H. Runyon. He set a post and marked an aspen for a bearing tree and dug trench, etc as per instructions.

February 9, 1972. McCombs Knutson Associates (Dickman Knutson, county surveyor) measured the east line of Section 6 and set a temporary quarter corner on the center line of the east-west gravel road in line with a telephone pole line to the south. Mr. John Drew, in the Southeast Quarter of Section 6 said this has been accepted as the correct corner.

August 30, 1972. Knutson dug for the corner and found a $\frac{1}{2}$ inch diameter iron pin, 2 feet long at the corner. Knutson took available reference ties and replaced the iron pin with a McLeod County cast iron monument.

June 4, 1991. We found the monument in good condition and checked the reference ties.

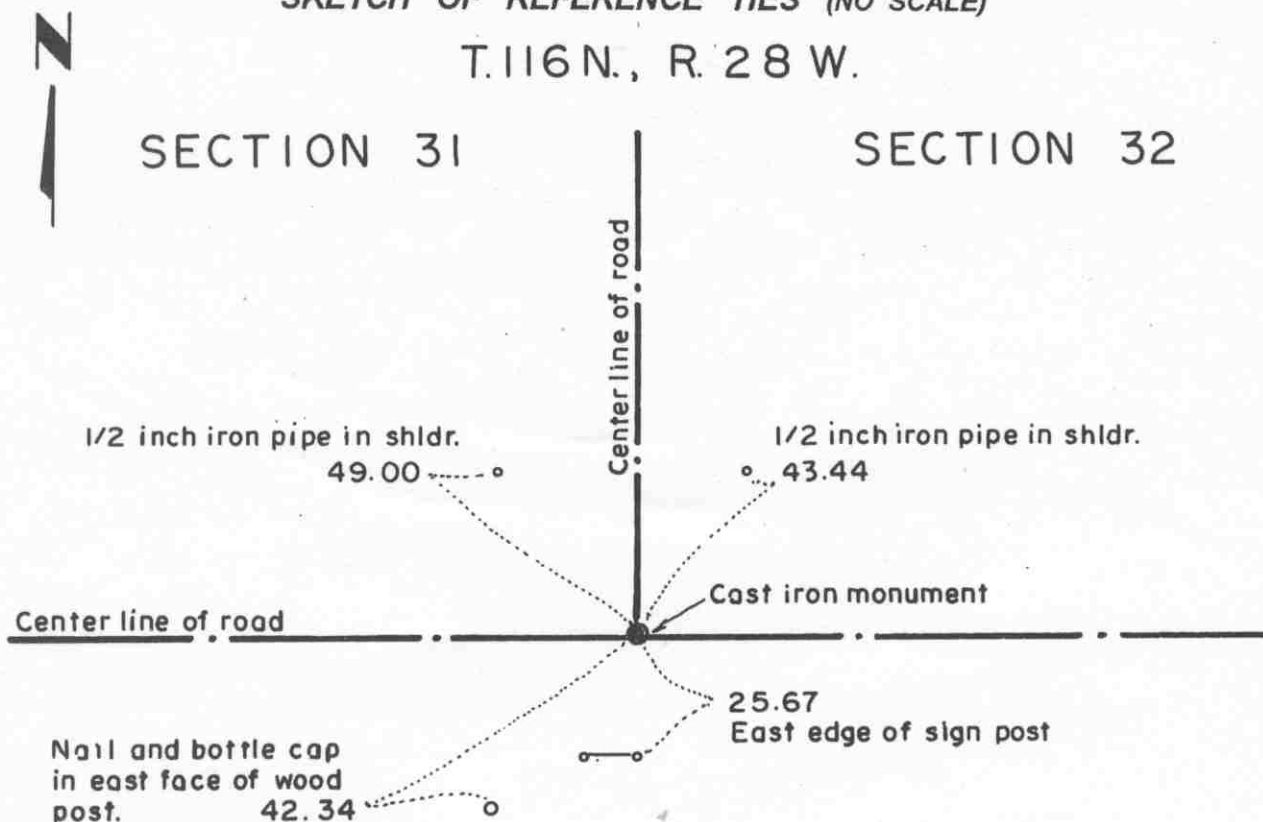
The cast iron monument is accepted as marking the quarter corner. It replaces an older monument and fits the occupation lines, the center line of the road and the telephone line to the south.

Certificate of Location of Government Corner

Northeast corner, Section 6, Township 115 North, Range 28 West

SKETCH OF REFERENCE TIES (NO SCALE)

T.116N., R. 28 W.



SECTION 6

SECTION 5

T.115 N., R. 28 W.

Statement of evidence relative to this corner location on sheet 2

I hereby certify that this document was prepared by me or under my direct supervision.

Willard Pellinen

Willard Pellinen
McLeod County Surveyor
License No. 9626.

Date Feb. 5, 1995

OFFICE OF THE COUNTY RECORDER
MCLEOD COUNTY, MINNESOTA

I hereby certify that this document was filed in this office at 9 o'clock A. M. on the 6th day of February 19 95.

Carmen Orlie Mulder County Recorder

By _____, Deputy.

Document No. 264004

Certificate of Location of Government Corner

Northeast Corner, Section 6, Township 115 North, Range 28 West

1855. John Ryan of the General Land Office established this corner. He set a post and marked 3 aspens and a cherry tree for bearing trees.

1969. The center line intersection of the roads has been accepted by adjoining land owners as being the section corner.

September, 1969. Dickman Knutson, county surveyor, found a 1/2 inch iron pipe at the center line intersection, roads north, east and west and replaced it with a McLeod County cast iron monument. He took reference ties.

November 12, 1992. We found the monument in good condition down 4 inches below the surface of the road and took new ties.

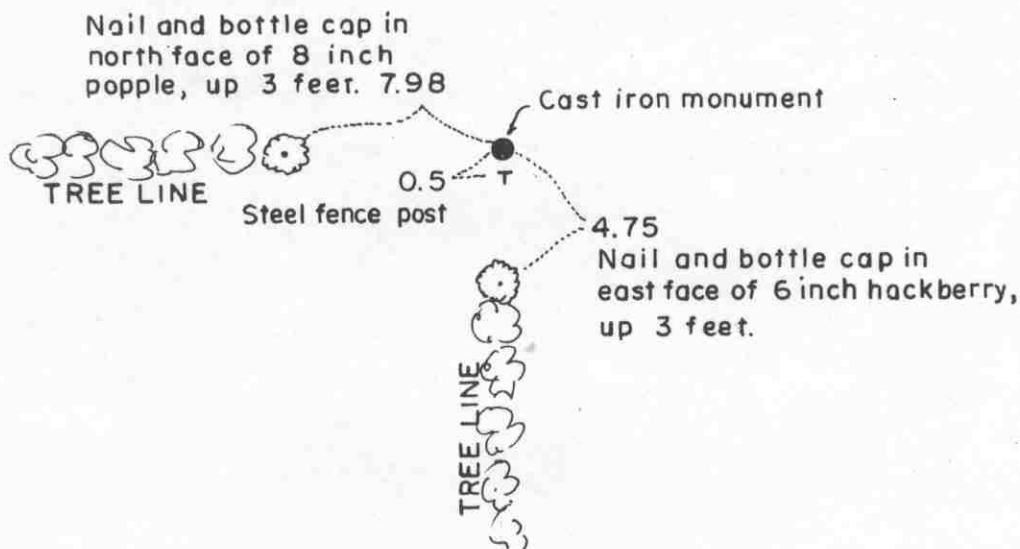
The monument set by Knutson is accepted as marking the location of the government corner. It fits long standing occupation lines (the roads) and it perpetuates the location of an older monument.

Certificate of Location of Government Corner

North Quarter corner, Section 6, Township 115 North, Range 28 West

SKETCH OF REFERENCE TIES (NO SCALE)

SECTION 31, T.116, R. 28



SECTION 6, T.115, R. 28

Statement of evidence relative to this corner location on sheet 2

I hereby certify that this document was prepared by me or under my direct supervision.

Willard Pellinen

Willard Pellinen
McLeod County Surveyor
License No. 9626.

Date April 20, 1995

OFFICE OF THE COUNTY RECORDER
MCLEOD COUNTY, MINNESOTA

I hereby certify that this document was filed in this office at 9 o'clock A. M. on the 24th day of Apr 19 95.

Carmen Ostlie Mulder, County Recorder

By _____, Deputy.

Document No. 265313

Certificate of Location of Government Corner
North Quarter Corner, Section 6, Township 115 North, Range 28 West

1855. John Ryan of the General Land Office established this corner. He set a post and marked a 12 inch oak and a 10 inch oak for bearing trees.

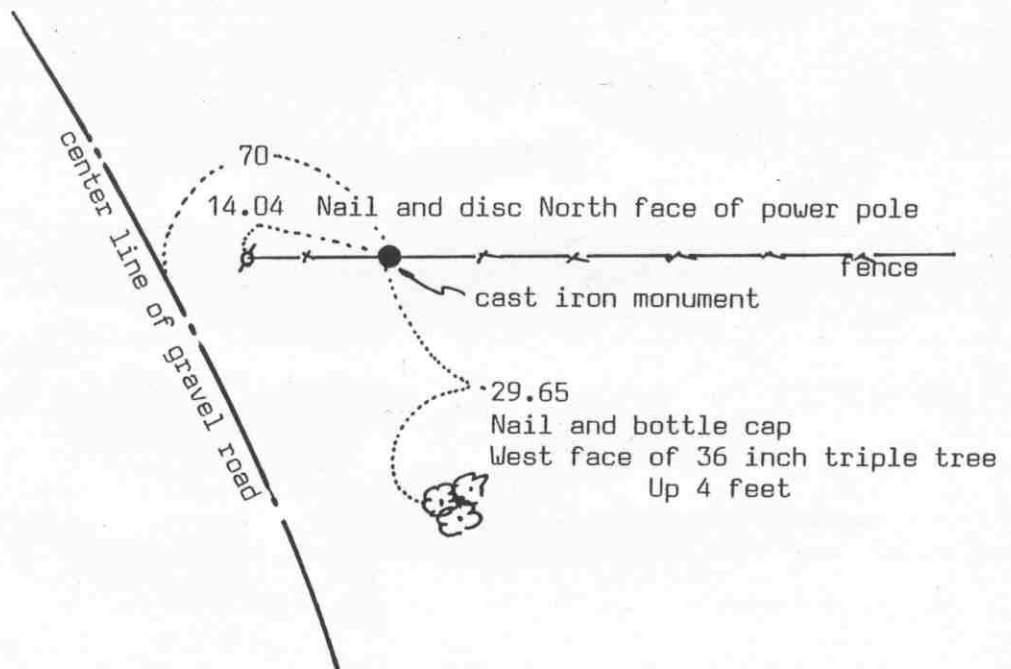
September, 1969. Adjoining land owners agree the fence corner is the quarter corner. Dickman Knutson, county surveyor, set a McLeod County cast iron monument at the intersection, fences east, west and south and took available reference ties.

February 1, 1995. We found the monument in good condition and took new available reference ties.

NORTHEAST corner, Section 1, Township 115 North, Range 29 West

Certificate of Location of Government Corner

SKETCH OF REFERENCE TIES (NO SCALE)

SECTION 36
T. 116 R. 29SECTION 31
T. 116 R. 28SECTION 1
T. 115 R. 29SECTION 6
T. 115 R. 28

Statement of evidence relative to this corner location on sheet 2

I hereby certify that this document
was prepared by me or under my
direct supervision.

Willard Pellinen

Willard Pellinen
McLeod County Surveyor
License No. 9626

Date March 19, 1993

OFFICE OF THE COUNTY RECORDER MCLEOD COUNTY, MINNESOTA.

I hereby certify that this document was filed in this
office at 4 o'clock P. M. on the 27th day
of July, 1993.

Carmen Ostlie Mulder, County Recorder

By _____, Deputy

Document No. 253813

NORTHEAST corner, Section 1, Township 115 North, Range 29 West*Certificate of Location of Government Corner*

1855. This corner was originally established by John Ryan of the General Land Office. He set a post and marked an oak for a bearing tree.

September, 1969. Clarence Ondrachek, in the Northeast Quarter of Section 1, said there is an iron at the corner, near an iron post. Dickman Knutson, county surveyor, found iron rod beside an iron post and replaced it with a McLeod County cast iron monument. He took available reference ties.

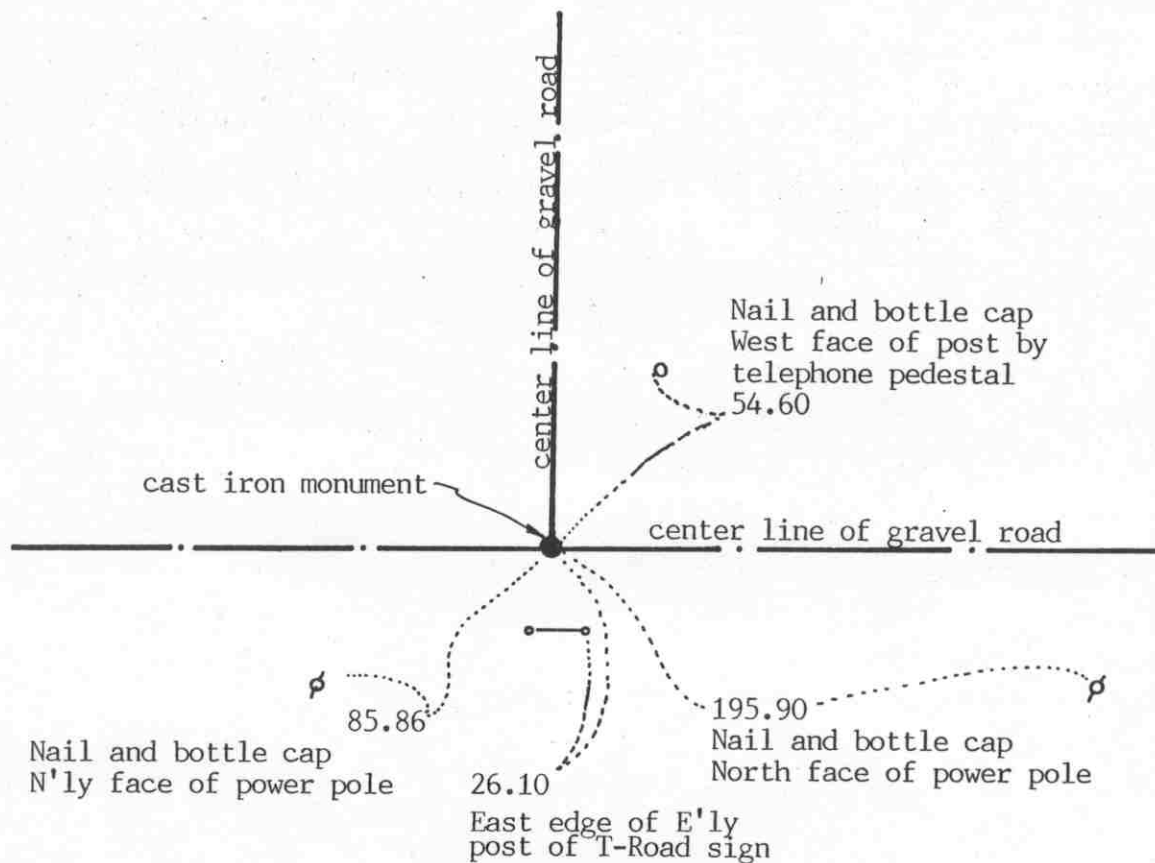
February 5, 1993. We found no ties remaining. We found the monument in good condition along the east-west fence, and took new reference ties.

The monument set by Knutson is accepted as marking the correct location of the section corner. It fits long standing occupation lines and it replaces an older monument which had been accepted by adjoining land owners as the section corner.

EAST QUARTER corner, Section 1, Township 115 North, Range 29 West

Certificate of Location of Government Corner

SKETCH OF REFERENCE TIES
(NO SCALE)



SECTION 1 T. 115 R. 29

SECTION 6 T. 115 R. 28

Statement of evidence relative to this corner location on sheet 2

I hereby certify that this document was prepared by me or under my direct supervision.

Willard Pellinen

Willard Pellinen
McLeod County Surveyor
License No. 9626

Date 2/23/93

OFFICE OF THE COUNTY RECORDER
MCLEOD COUNTY, MINNESOTA.

I hereby certify that this document was filed in this office at 9 o'clock A.M. on the 4th day of March, 1993.

Armen H. Mulder, County Recorder

By _____, Deputy

Document No. 250779

EAST QUARTER corner, Section 1, Township 115 North, Range 29 West

Certificate of Location of Government Corner

July, 1855. John Ryan of the General Land Office established this corner. He set post, in a wet marsh, deposited charcoal, built mound and pit 8 links east.

August 27, 1970. McCombs Knutson Associates (Dickman Knutson, McLeod County Surveyor) found an iron pin at the intersection of road east-west-north. Knutson replaced the iron pin with a McLeod County cast iron monument and took reference ties.

February 5, 1993. We found the monument in good condition down 6 inches below the road surface and took new reference ties.

The monument set by Knutson is accepted as marking the location of the quarter corner. It fits long standing occupation lines, the road center lines and it perpetuates the location of an older monument.